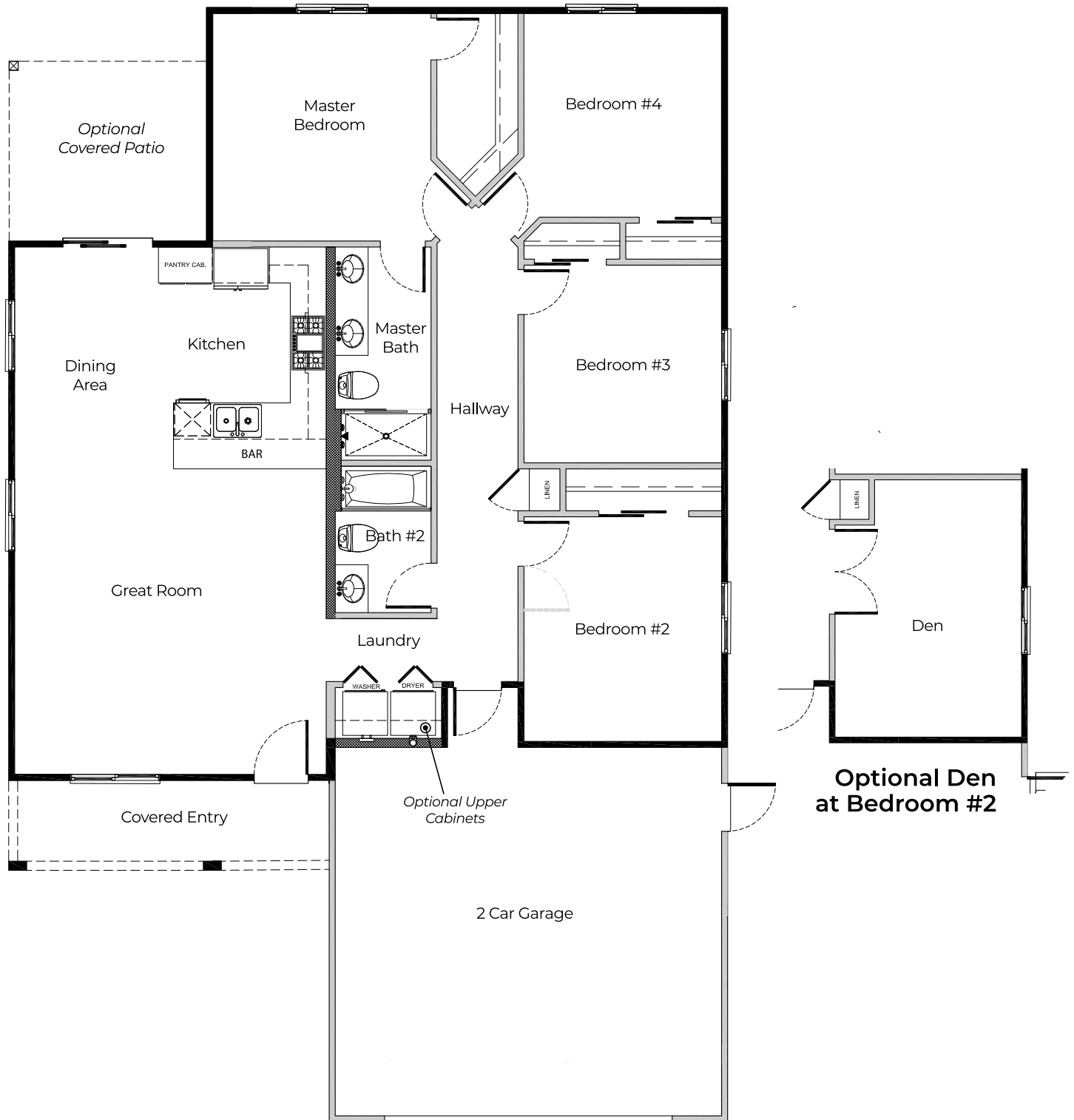




# ORCHARD 79

WILLOW

4 BEDROOMS | 2 BATHS | 1523 SQ FT



Orchard 79 / All Rights Reserved. Builder and Developer are an equal opportunity housing provider and do not discriminate in housing based on race, color, national origin, religion, gender, sexual orientation, age, mental or physical disability, familial status, marital status source of income or any other characteristics protect by Federal, State, or local law. Builder & Developer reserves the right to make modifications or changes to plans, specifications, features, elevations, design materials, and amenities. Floor plans may vary. Square footage and room dimensions are approximate only. Information provided does not constitute an offer to sell nor a solicitation of an offer to purchase real property. Exclusively represented by ERA Valley Pro Realty.

JUNE 2022



DRE#02059792

559-258-1250





ORCHARD<sub>79</sub>

WILLOW



ELEVATION A



ELEVATION B



ELEVATION C